



AGILE, ROBUST,  
SMART LAB SYSTEM.  
SUSTAINABILITY AND RESILIENCE.

## AL MFI MELT FLOW INDEXER

\* Long Life – High Precision

Melt flow index tests are carried out and define the true process to characterise the melt flow of plastic raw materials. Equipment can perform compliance with **TS EN ISO 1133** and **ASTM D 1238** standards. It simulates the behaviour of polymer product or raw material in melt phase, with measuring melt characteristic and determine the quality.



+90 212 924 56 52

[www.alarge.com.tr](http://www.alarge.com.tr)

ALARGE ALIÇ AĞACI MAK. ELEK. AR-GE SAN. TİC. LTD. ŞTİ.

Çifte Havuzlar Mah. Eski Londra Asfaltı Cd. YTÜ Teknopark D2 Blok No: 2B01 Davutpaşa - İstanbul/TÜRKİYE

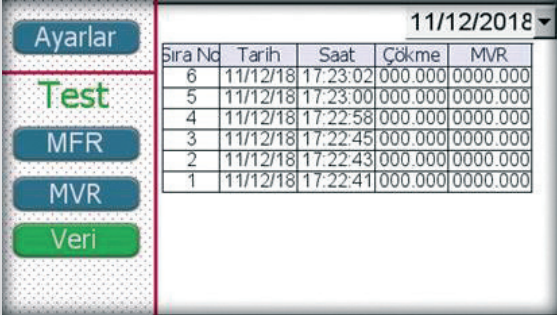
Fax: +90 212 278 61 33 Mail: info@alarge.com.tr

# AL MFI MELT FLOW INDEXER

## TECHNICAL SPECIFICATIONS

### 3 MODELS AVAILABLE: AL MFI-A, AL MFI-AB and AL MFI-ABA

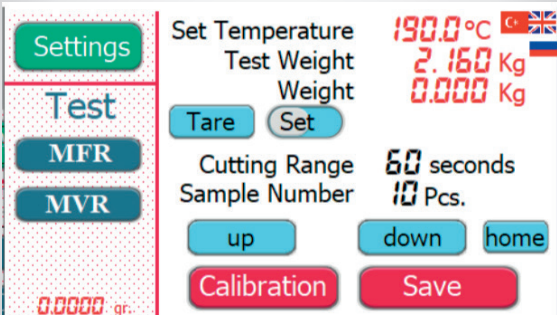
- ✓ Two region heaters and two region adaptive/PID control heating system
- ✓ Independent temperature control in both compartments
- ✓ Equivalence in heat distribution
- ✓ User friendly, high precision easy to use
- ✓ Functional with touch screen and graphical software
- ✓ Automated cutter – adjustable cutting time, type and plug ping for release
- ✓ Rigid, solid and stable structure
- ✓ Automated calculation and reporting software for MFI MVR test



11/12/2018

Sıra No	Tarih	Saat	Çökme	MVR
6	11/12/18	17:23:02	000.000	0000.000
5	11/12/18	17:23:00	000.000	0000.000
4	11/12/18	17:22:58	000.000	0000.000
3	11/12/18	17:22:45	000.000	0000.000
2	11/12/18	17:22:43	000.000	0000.000
1	11/12/18	17:22:41	000.000	0000.000

Ayarlar  
Test  
MFR  
MVR  
Veri



Settings  
Test  
MFR  
MVR

0.0000 gr.

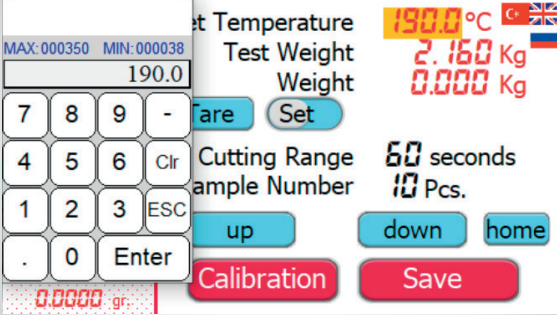
Set Temperature 190.0°C  
Test Weight 2.160 Kg  
Weight 0.000 Kg

Tare Set

Cutting Range 60 seconds  
Sample Number 10 Pcs.

up down home

Calibration Save



MAX: 000350 MIN: 000038  
190.0

7 8 9 -  
4 5 6 Clr  
1 2 3 ESC  
. 0 Enter

Set Temperature 190.0°C  
Test Weight 2.160 Kg  
Weight 0.000 Kg

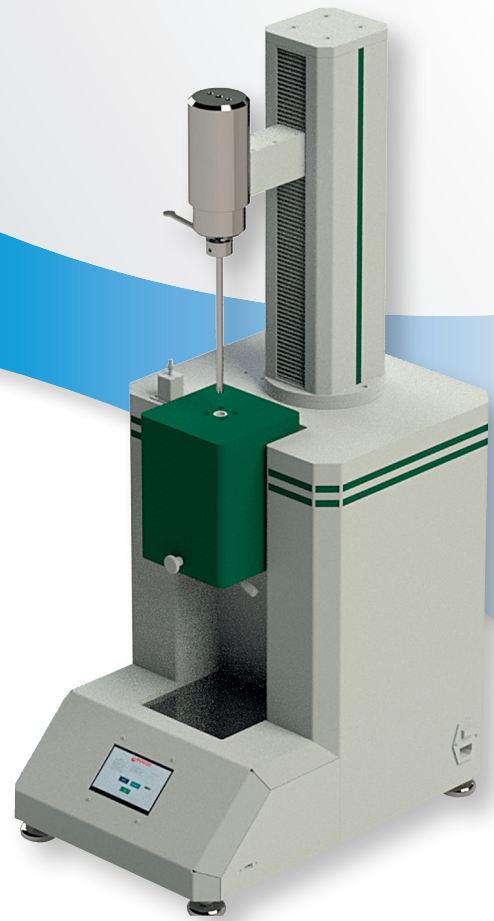
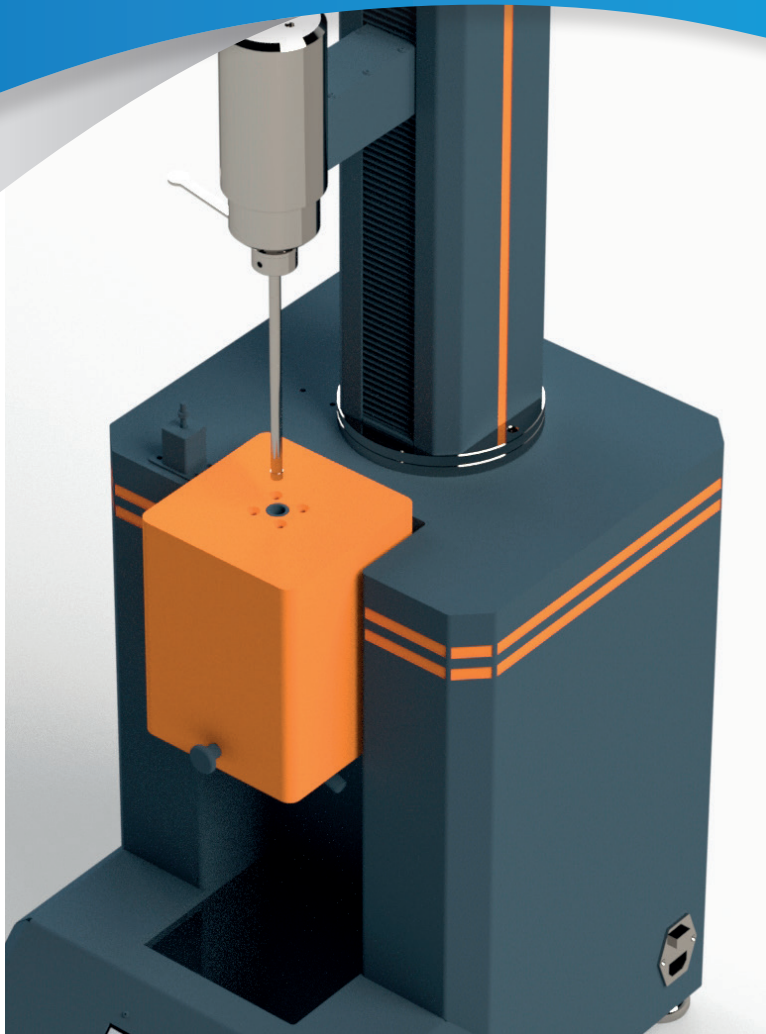
Tare Set

Cutting Range 60 seconds  
Sample Number 10 Pcs.

up down home

Calibration Save

- ✓ Modular structure. AL MFI A, AL MFI AB and AL MFI ABA instruments are convertible to each other



### ORIFICE SPECIFICATIONS

Length	8 mm ± 0,025 mm
Exterior Dimensions	9,55 +- 0,007 mm
Interior Dimensions	9,55 +- 0,007 mm
Rigidity	500 Vickers
Surface Roughness	10 micron
Material	Tungsten Carbide
Lengh	162 mm
Coating	Titanium

www.alarge.com.tr

+90 212 924 56 52



# AL MFI MELT FLOW INDEXER TECHNICAL SPECIFICATIONS

MODEL	AL-MFI-A	AL-MFI-AB	AL-MFI-ABA
Test Method	MFI, MFR	MFI, MFR, MVR	MFI, MFR, MVR
Standards	ASTM D1238, TS EN ISO 1133		
Orifice Material	Titanium Coated Tungsten Carbide	Titanium Coated Tungsten Carbide	Titanium Coated Tungsten Carbide
Type end/Orifice Plug	X	✓	✓
Orifice Diamonds	2,095 ± 0,005 mm		
Diameter of Melting Channel	9,55 ± 0,007 mm		
Melting Channel Material	Tungsten Carbide	Tungsten Carbide	Tungsten Carbide
Temperature Range	120-450 °C	120-450 °C	120-450 °C
Temperature Accuracy	0.1 °C	0.1 °C	0.1 °C
Temperature Control	Adaptive PID	Adaptive PID	Adaptive PID
Heating Time	10 min ( 25-200 °C)	10 min ( 25-200 °C)	10 min ( 25-up to 200 °C)
Sample Size	3-8 g	3-8 g	3-8 g
Cutting	Step Motor	Step Motor	Step Motor
Cutting Accuracy	0,01 sn	0,01 sn	0,01 sn
Cutting Time Range	0-9999 sn	0-9999 sn	0-9999 sn
Distance Sensor	<input type="checkbox"/>	✓	✓
Distance Sensor Accuracy	<input type="checkbox"/>	5 micron	5 micron
Auto. Weight Loading Module	<input type="checkbox"/>	<input type="checkbox"/>	✓
0,325 kg Load	✓	✓	✓
1,2 kg Load	✓	✓	✓
2,16 kg Load	✓	✓	✓
3,8 kg Load	✓	✓	✓
5,0 kg Load	✓	✓	✓
8,7 kg Load	✓	✓	✓
10,0 kg Load	✓	✓	✓
12,5 kg Load	<input type="checkbox"/>	<input type="checkbox"/>	✓
20,0 kg Load	<input type="checkbox"/>	<input type="checkbox"/>	✓
21.6 kg Load	<input type="checkbox"/>	<input type="checkbox"/>	✓
USB Data Port	✓	✓	✓
Alarge Reporting Software	✓	✓	✓
Net Weight	40 kg	43 kg	80 kg
Electric Rating	220 V / Single Phase	220 V / Single Phase	220 V / Single Phase
Power (Watt)	450 W	450 W	450 W

Available ✓ Optional  Not Applicable X



## Technical Identity :

**Equivalent heat dissipation with dual zone heating system, high accuracy titanium coated Tungsten Carbide Core and Type end / Orifice.**

## Usage Identity :

**Automatic cutting and touch screen panel easy testing. Type and plug mechanism to get air from sample. Statistical evaluation of result.**